

ARCHITECTURAL CONCEPT: RENDEZ-VIEW IN WOOLLOOMOOLOO

Since 1882 the twin spires of St. Mary's Cathedral, located relatively close to the competition site, ranked amongst the many attractive traditional features which adorned the skyline of downtown Sydney. The early 20th century saw the erection of taller structures such as the T&G Building (1931) which had a dramatic central tower feature. The AWA Building followed in 1939, which was topped out with an Eiffel Tower like transmitter. However, the 1960's saw the beginning of the colonisation of the city by unimaginative box-shaped tall 'stumps' that could be found anywhere in the world. The 'Sydney is Beautiful' competition is a timely opportunity to start the re-establishment of a unique and joyful skyline for the city.

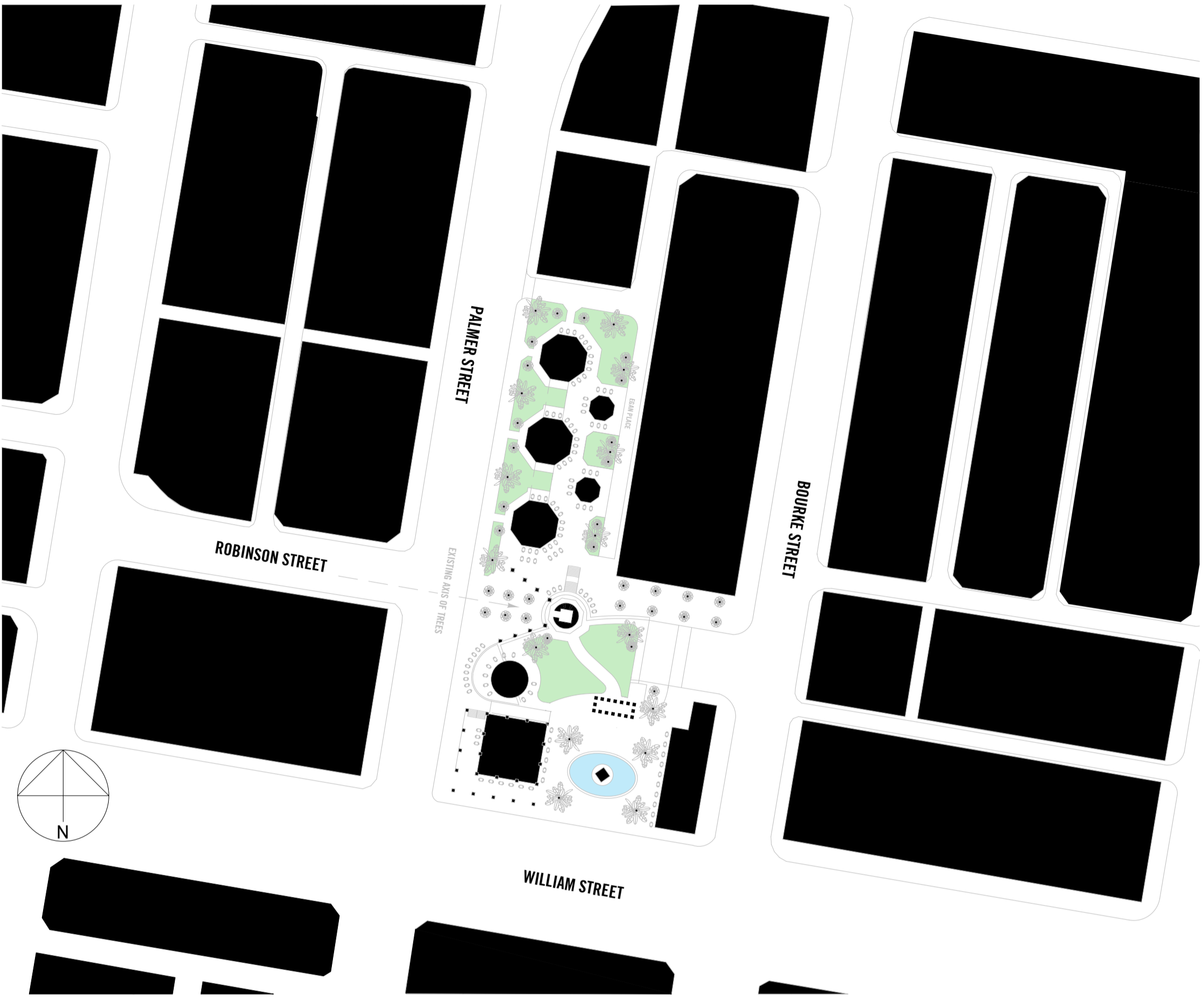
Our concept is to make the whole site into a new public space and park, with restaurants, cafes and exhibition spaces interspersed throughout. This will create a new meeting spot, a new heart for Woolloomooloo. A series of classical style towers (cross-laminated timber structures, from renewable sources, clad in the locally quarried Hawkesbury Sandstone) with rooftop galleries will provide views across Sydney, the harbour and the bay. Some of these lofty spaces will be public sight-seeing platforms and others will house restaurants and sky-bars.

The tallest of these structures, at the corner of William Street and Palmer Street, will rise confidently and symbolically above the adjacent 26-storey Sydney Boulevard Hotel. The domed cupola on top will house a public meeting space, with all-round panoramic views.

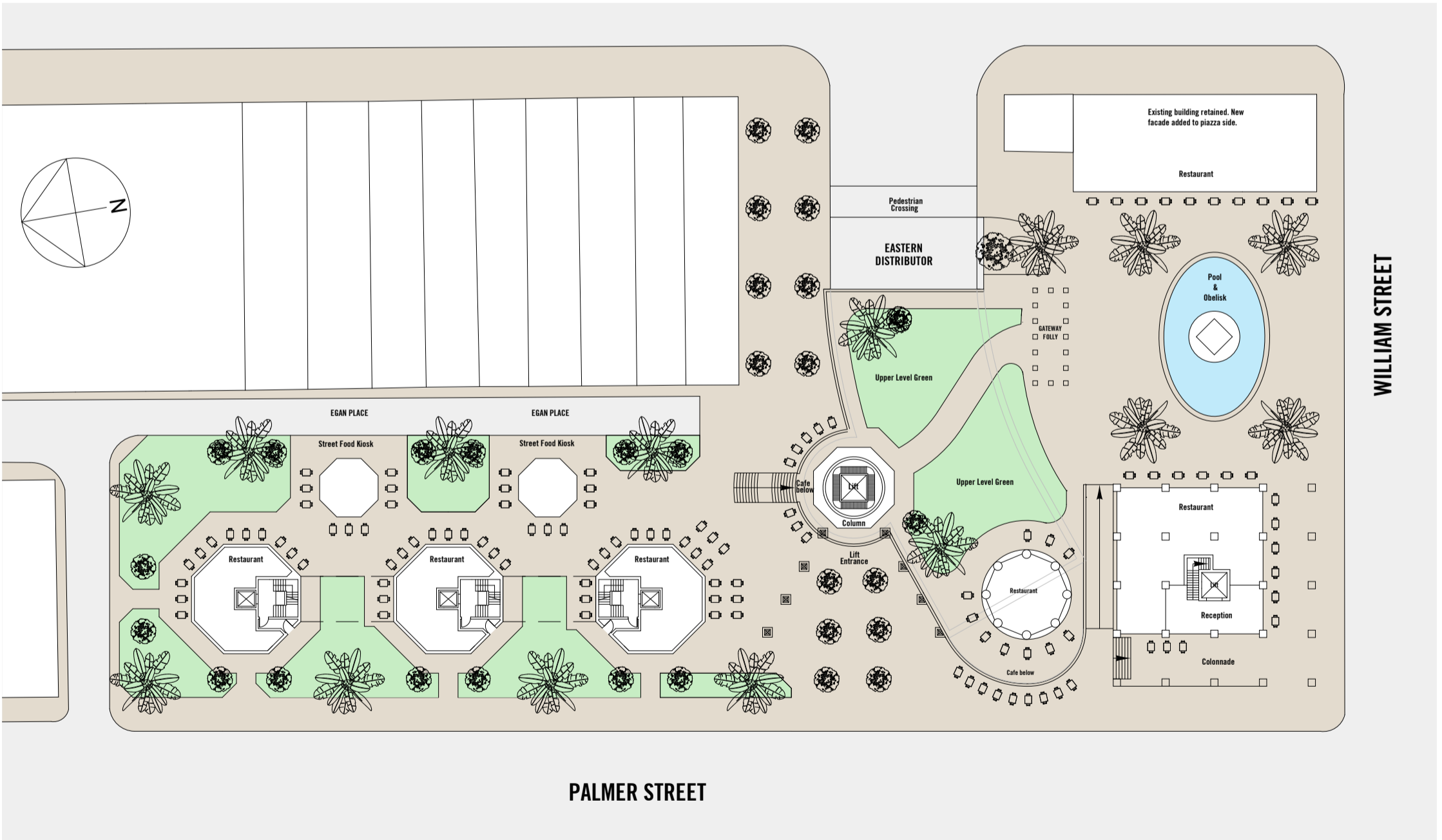
The new tower cluster is intended to be a memorable landmark for Sydney. It will, it is hoped, establish Woolloomooloo as the city's location for the future growth of new buildings with beautiful skylines and traditional architectural detailing.



AERIAL VIEW FROM WILLIAM STREET TOWARDS SYDNEY HARBOUR



EXISTING AND PROPOSED FABRIC 1:1000



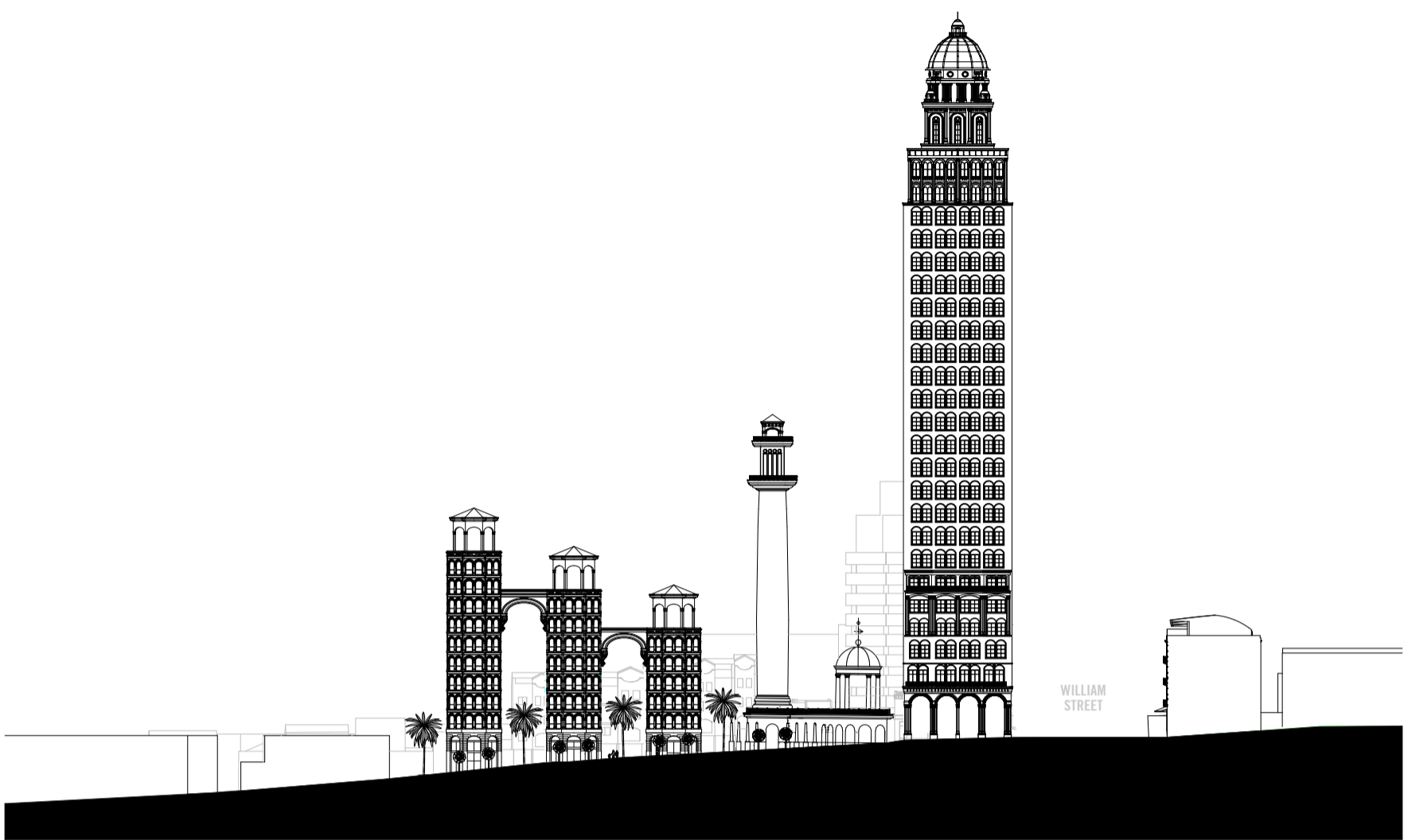
BLOCK PLAN 1:500

RENDEZ-VIEW IN WOOLLOOMOOLOO
A NEW URBAN PARK WITH SPECTACULAR VIEWS ACROSS SYDNEY AND THE HARBOUR - SHEET 1 OF 2 (A1 SIZE)

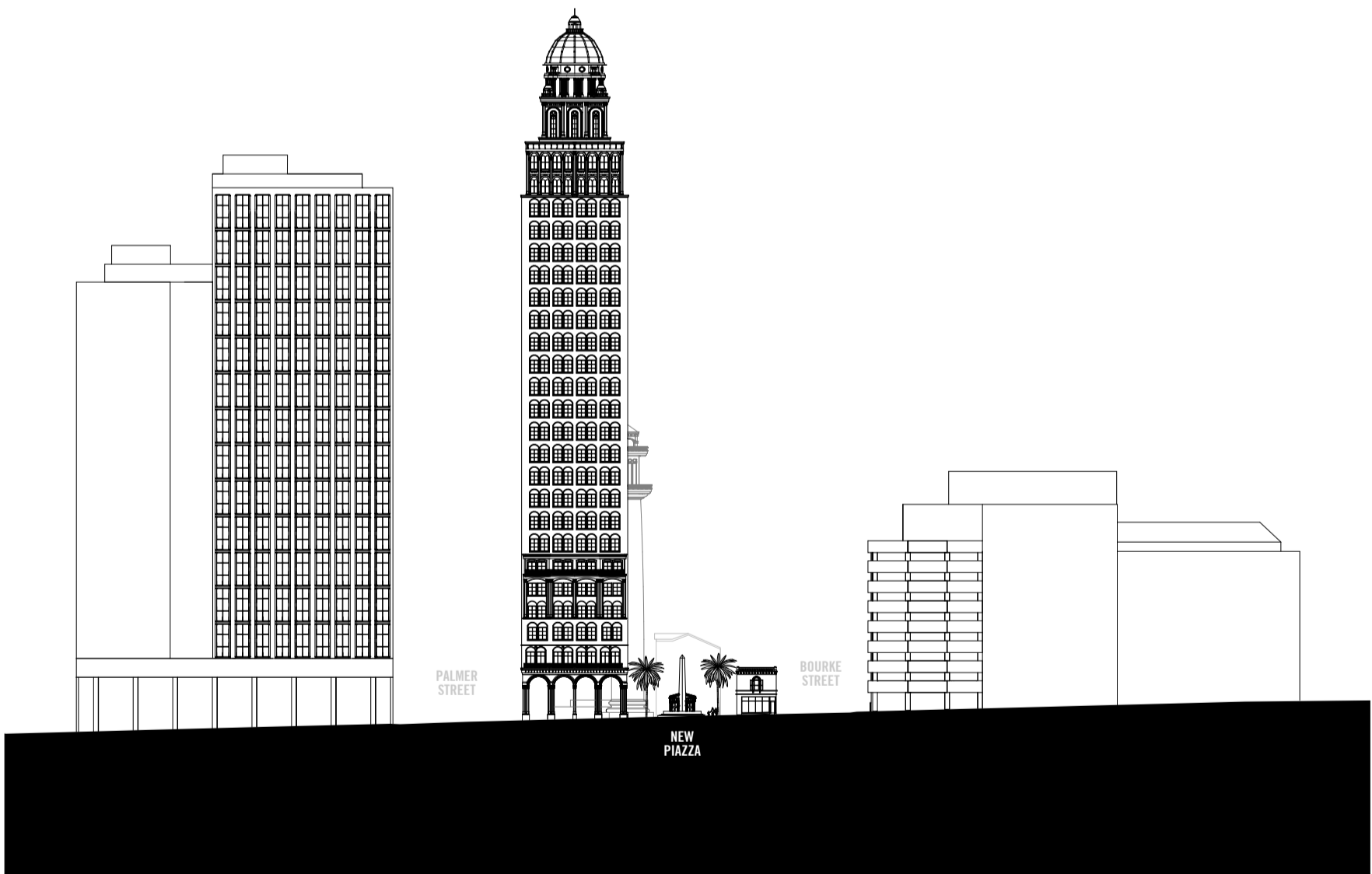
PLACE LAB WITH RHYS CARSON
WARING STREET, BELFAST, NORTHERN IRELAND +44 2890 992446



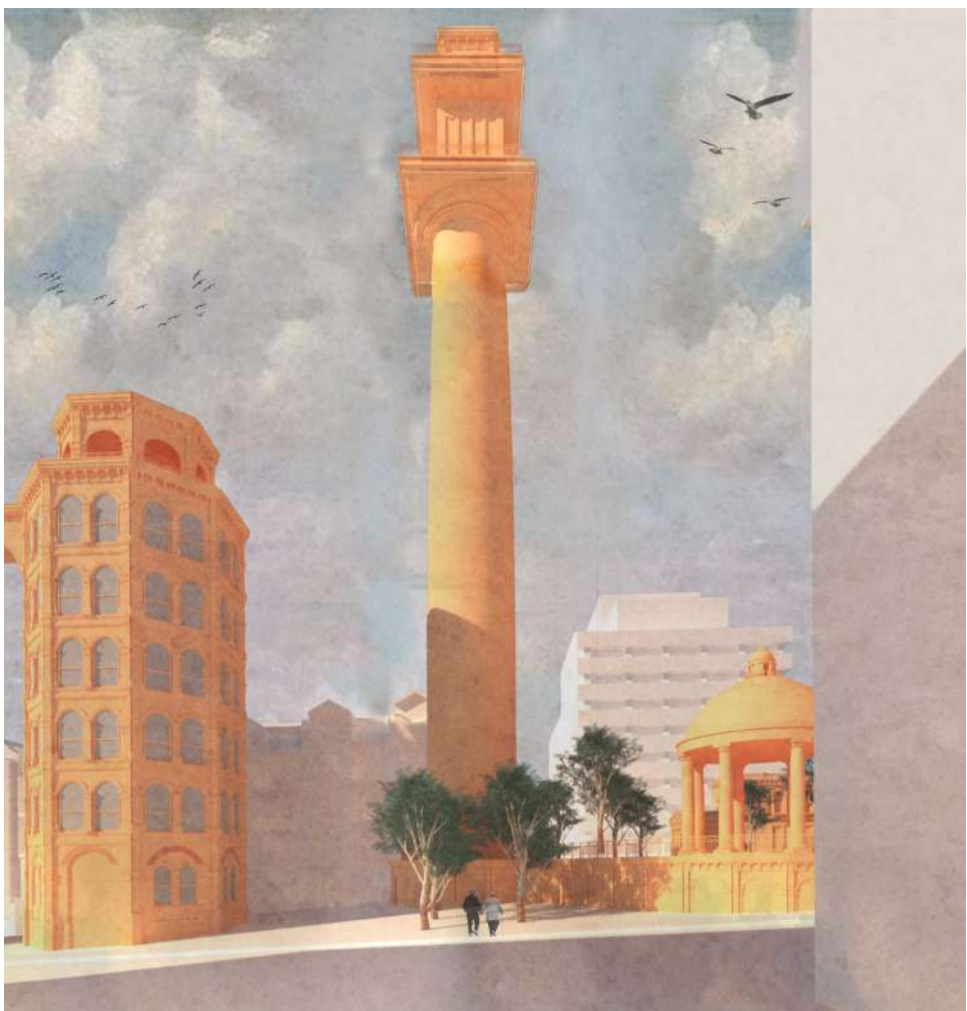
VIEW FROM WILLIAM STREET TOWARDS NEW PIAZZA



ELEVATION ALONG PALMER STREET 1:2500



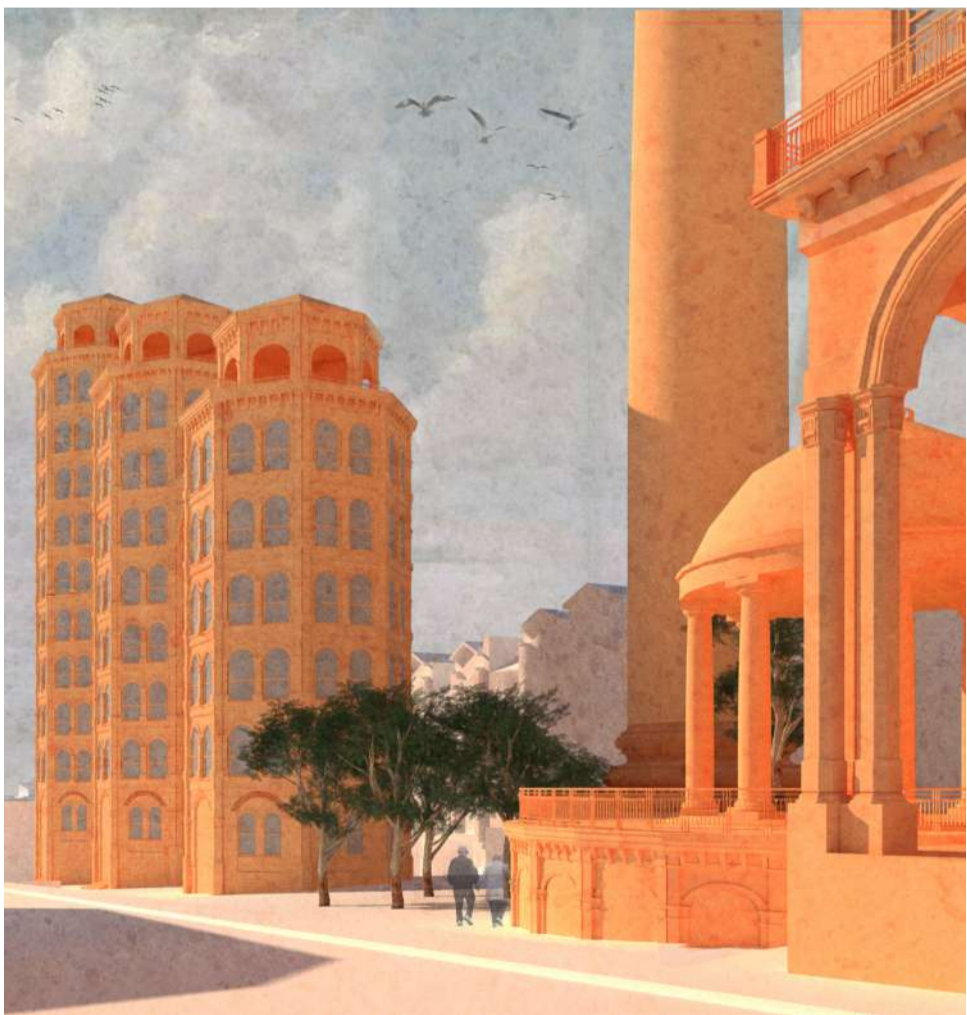
ELEVATION ALONG WILLIAM STREET 1:2500



SKETCH VIEW FROM ROBINSON STREET



SKETCH VIEW UP PALMER STREET



SKETCH VIEW DOWN PALMER STREET