

# Sydney Is Beautiful

The Woolloomooloo Precinct aims to become a beautiful architectural development that combines traditional design language with technical proficiency to create a functional and visually pleasing assembly to complement the rich heritage of Sydney's urban fabric. The use of "abbreviated classicism" is applied to ensure the architecture is based on the classical principles of proportion and order while remaining contemporary and relevant to today's context.

The development features an ensemble of four typologies to support a diverse range of social and commercial interactions, all arranged to suit the existing road tunnel and site conditions. [1] row of terrace housing, inspired by the Victorian and Edwardian terrace houses that are a defining feature of the area's streetscape, helps to stitch the development into the surrounding neighbourhood and contribute to it's character. [2] cultural building (such as a museum or gallery) serves as the terminated vista from Robinson Street and embraces an existing tree to form a semi-cloistered public gathering space. [3] mixed-use building of commercial and street level retail spaces helps to barricade the main road of William Street, with small laneways creating social intimacy between each building. [5] The refurbishment of 132 William Street serves as the historical anchor of the development, with [4] the tower as a backdrop that houses a blend of office and cultural/civic amenities with river views and grand multifunction spaces on its top levels.

The development makes a significant contribution to the local neighbourhood by using locally sourced materials and stone aggregates to form the detailed finishes of the façade and street-level materiality, thus anchoring the project to its geology and emphasising its belonging to its context.

Sustainability is at the heart of the Woolloomooloo Precinct's design, with a focus on climatically responsive design and long-term structural durability. The construction methods used incorporate a blend of state-of-the-art and age-old technologies, such as self-healing concrete and precast post and beam façade construction elements for efficiency and a rhythmic aesthetic, to ensure its longevity. The internal floor and piloti structure shall be an assembly of mass laminated timber composites to create an overall low-embodied-carbon design. An emphasis is also placed on natural cross ventilation and passive solar design principles, which respond to the local climatic conditions and prevailing breezes, to encourage low running costs and a healthier indoor environment for its inhabitants.

The Woolloomooloo Precinct is a project that not only enhances the aesthetic of the area but also improves the quality of life for the inhabitants and it's visitors to ensure that Sydney Is Beautiful.



Aerial Top View



Robinson Street Vista



South West Isometric View



Corner of William and Bourke Street



Corner of William and Palmer Street



Bourke Street Looking North



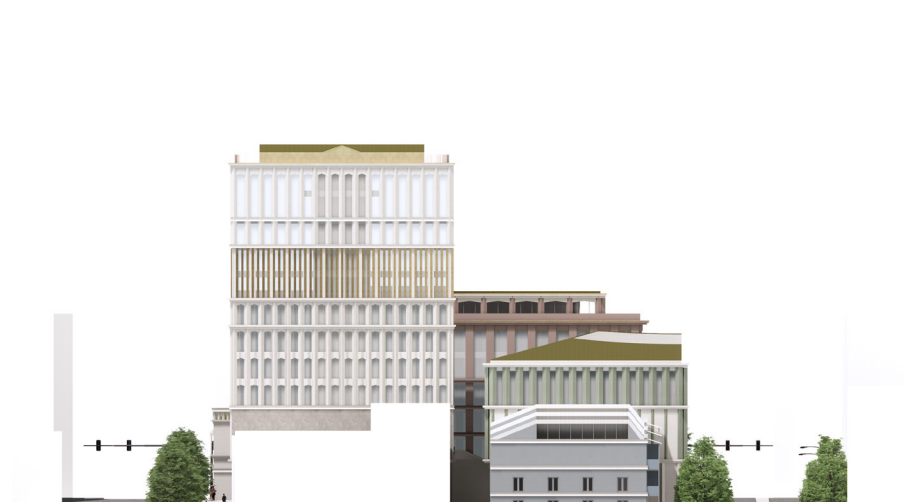
West Elevation



South Elevation



East Elevation



North Elevation



West Elevation