

AN URBAN PROPOSAL FOR

# 114 WILLIAM STREET, WOOLLOOMOOLOO NEW SOUTH WALES

*Sydney is Beautiful*  
2022

The urban fabric of Woolloomooloo will be significantly improved when a proper relationship between people and vehicles is restored. To that end, a grand hotel is proposed to signify a return to the early aspirations of William Street as the 'Champs-Élysées' of Sydney. The fan-shaped plan of the tower reflects current constraints of the site, however it offers expansive views to Hyde Park and Sydney Harbour from the upper floors. Palmer Street frontage is rebuilt with traditional terrace houses and a small apartment building in an effort to provide a variety of housing and commercial opportunities to support the socioeconomic diversity of Woolloomooloo. This urban proposal has been conceived in phases, with the eventual goal of replacing the Eastern Distributor with a Metro train line.



*Aerial view looking southeast*



*View of Hotel from William Street*



*View of public plaza along Palmer Street*



*Terrace Houses*

*Apartments over Shops and Restaurants*

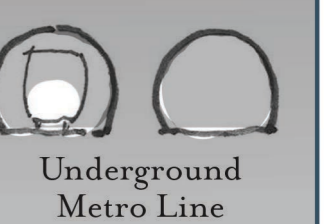
*Hotel drop-off*

*Hotel over Shops and Restaurants*

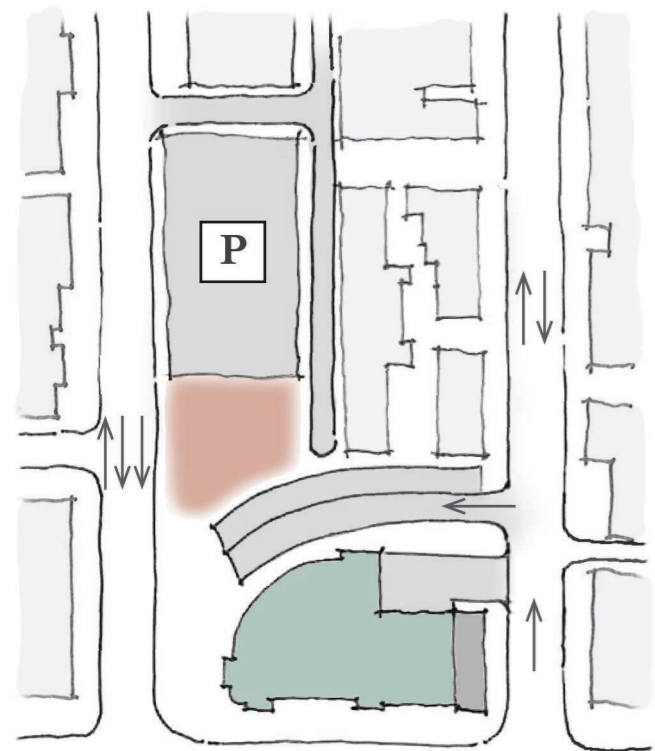
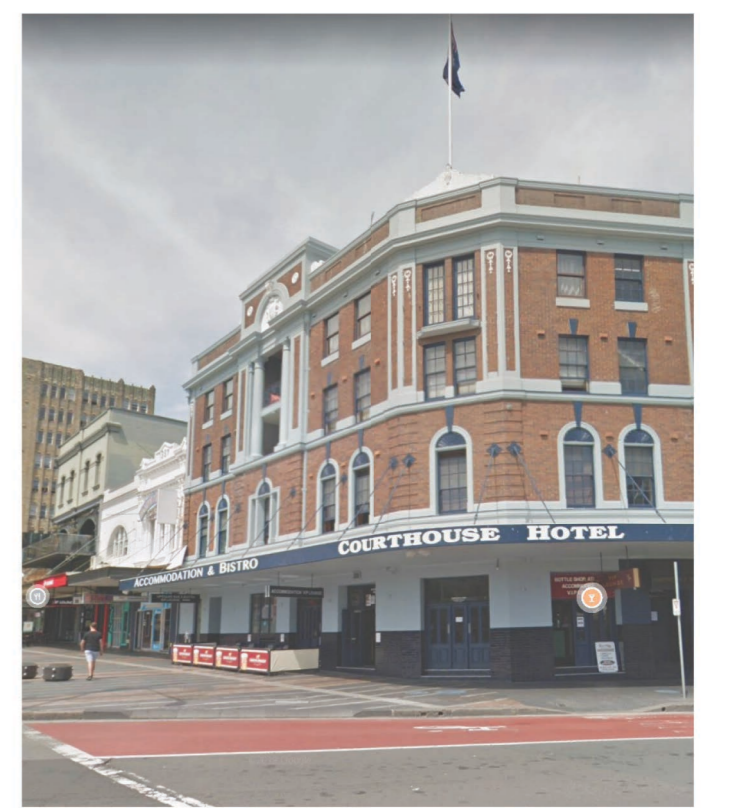
*William Street*

## PALMER STREET ELEVATION

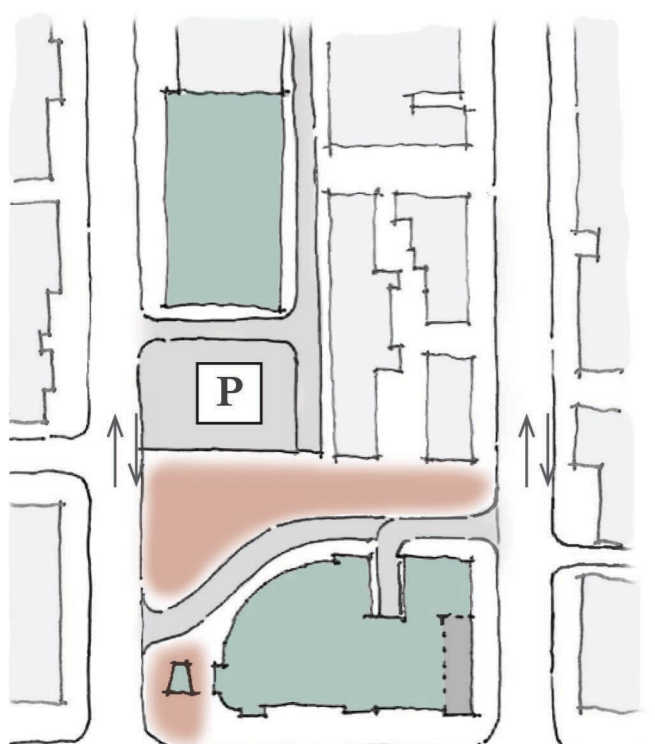
1:250



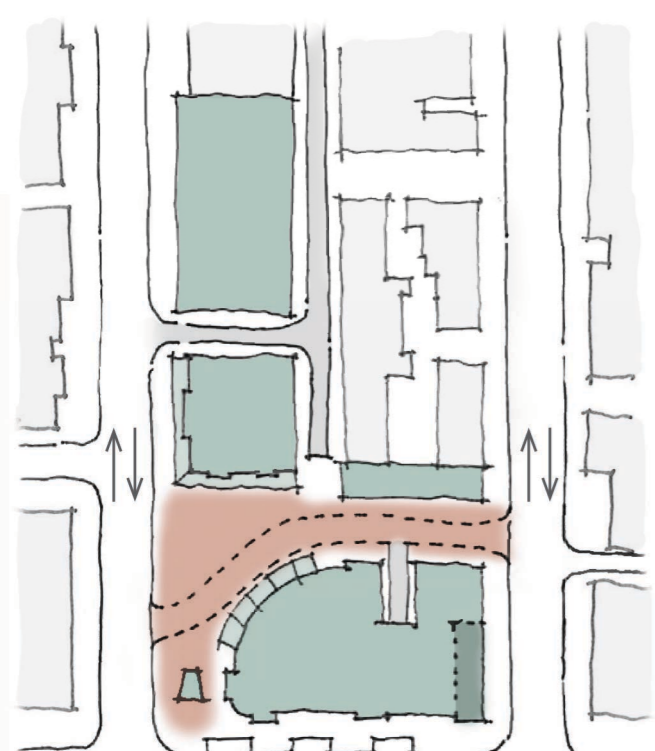
Underground  
Metro Line



NEAR-TERM constraints of the Eastern Distributor dictates the building form along William Street. Parking needs are provided in a lot along Palmer Street.

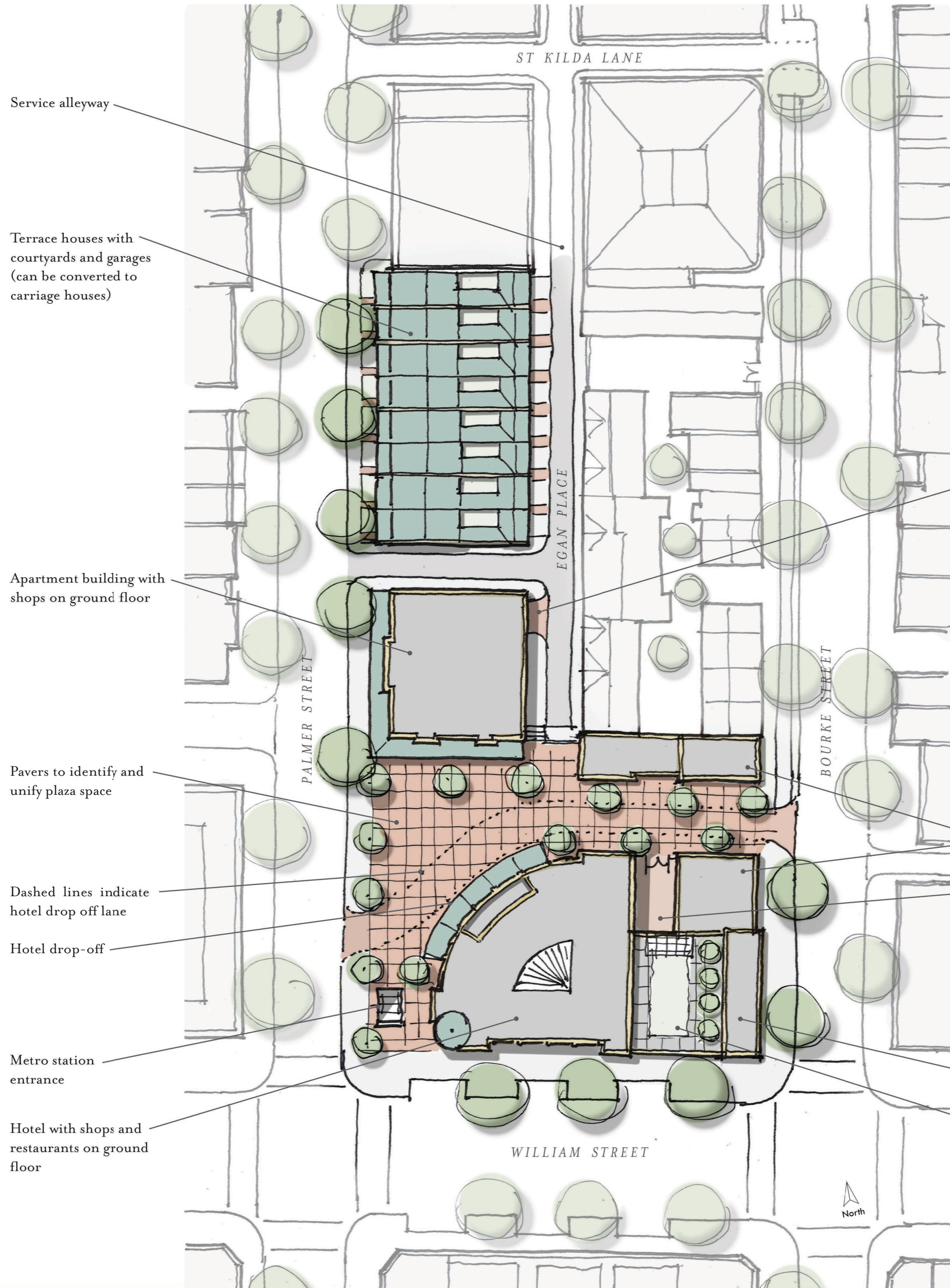


MID-TERM goal of replacing the Eastern Distributor with underground Metro line is realized. Surface level constraints are removed. Parking is less of a demand and the lot can be replaced with development.



LONG-TERM goal proposes more infill development and transforms the interstitial space into a public plaza alongside the drop off for hotel.

IMPLEMENTATION



SITE PLAN  
1:500



BAY DETAIL  
1:100



WILLIAM STREET ELEVATION  
1:250